



## SEND and Inclusion Newsletter Spring 2026

I hope you had a lovely half-term break. We are now halfway through this academic year and looking forward to all that lies ahead this term and next.

If you haven't already, head to the [SEND and Inclusion section](#) of our school website, where you will hopefully find information and advice readily available.

### Free FACE Family Advice Online Talks



The free FACE family advice online sessions have been well attended by families from both NMJS and NMIS. The **March** schedule of talks have been emailed to you. Visit the school website for more information here: [New Milton Junior School - FREE F.A.C.E. Family Advice](#)

### ADHD Q&A Session at New Milton Infant School

**Event Timing:** Thursday 12th March 9:00am-10:00am

**Event Venue:** New Milton Infant School

We will be running a follow-up ADHD workshop at **New Milton Infant School** for pupils, focusing on understanding attention, emotions, and strategies to support learning and wellbeing. This invitation is open to families who have a child with an ADHD diagnosis, who may be on the assessment pathway, or where there are questions or suspicions around neurodivergence. The session is designed to be supportive, positive, and strengths-based, and attending may help you gain insight into:

- **How ADHD can present**
- **Strategies used to support focus, organisation, and emotional regulation**
- **Language and approaches that help children feel understood and confident**

There is no expectation or requirement for a formal diagnosis to attend. Our aim is simply to build shared understanding and strengthen the partnership between home and school.

To sign up, please complete this online form: <https://forms.gle/KjQZKZZUdQQQxKfs8>

We look forward to working together to support our children in the best way possible.

## Year 6 Transfer to Year 7

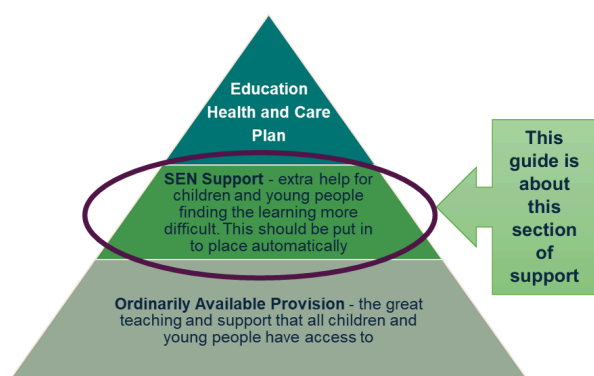
Parents and carers will receive an email on **Tuesday 3rd March** notifying you of the secondary school your child has been allocated.

Families of children with an EHCP were notified on 12th February.

Meetings have already been held between myself and Mrs Battrick-Mantell (Arnewood SENDCo) where we have planned the first wave of visits for children we have identified as requiring an additional transition plan.

On **Tuesday 10th March**, a group of Year 6 children will be joined at NMJS by two members of the Arnewood support team, Mr Lewis (Assistant SENDCo) and Mrs Tumity (ELSA). There will be three afternoon sessions together working on getting to know each other and preparing for the transition to Arnewood. Further visits to Arnewood and other local secondary schools, and meetings to discuss support plans will take place during the summer term of Year 6.

## Hampshire OAP and SEN Support Parent/Carer Advice



Hampshire SEND Team have recently released two informative documents to help parents and carers make sense of the provision children readily receive at school. Both documents are available on our school website:

[Ordinarily Available Provision](#)

[SEN Support](#)



## The NEST

*Nurture - Encourage - Support - Teach*

Our Nurture group has now been in place for 12 months and continues to grow as a vital support for a small, group of children across the school. The NEST provides a safe and predictable, structured environment in which children are given opportunities to develop their social skills, self-confidence and self-esteem. It is also a space where children can explore their feelings and learn how to manage them in appropriate ways, in a place where they feel valued and accepted.

## Government SEND White Paper: [Every Child Achieving and Thriving](#)

On Monday 23rd February, the much anticipated SEND White Paper was published. Once analysed, what the proposed changes will mean for families and children with SEND and EHCPs will become clearer. We will be available to answer any questions you may have and what this might mean going forward.

# Upcoming Events & Support



## You Are Not Alone - Free Parent Online Drop-In

Parenting an autistic child can feel amazing, confusing, and overwhelming, sometimes all in the same day. That's why we host our no-cost monthly online drop-in sessions for parents and carers.

First Tuesday of every month  
7pm - 8:30pm  
Platform: Zoom



Erik Wagter - host of the drop-in

What these sessions are all about

We've created a safe, non-judgemental space where parents can bring their questions, share stories and connect with others who get it.

Topics often included:

- Understanding and responding to challenging behaviour
- Making sense of autism on a deeper level
- The ups and downs of family relationships and dynamics
- Working with schools and professionals
- Meeting like-minded parents and realising you are not alone

What parents can expect to take away:

- Feeling heard, appreciated, and understood
- Knowing they are seen as the experts on their own child and family
- Feeling hopeful and having gained practical ideas

Who runs the sessions?

I'm Erik Wagter, co-founder of Autism Family Support Service. Alongside being a social worker, trainer and Solution Focused Family coach, I also bring over two decades of personal lived family experience of autism.

If you would like to join please send an email to [sallywagter@gmail.com](mailto:sallywagter@gmail.com) and we will send you the Zoom link.

Autism Family Support Service  
[www.autismfamilysupportservice.com](http://www.autismfamilysupportservice.com)

**Autism Family Support Service - You are not alone - Free parent/carer online drop-in First Tuesday of every month 7pm-8:30pm via Zoom. If you would like to join, email [sallywagter@gmail.com](mailto:sallywagter@gmail.com)**

# The Umbrella Group ASC Support for Parents and Carers

## [The Umbrella Group \(Autism Spectrum Condition\)](#)



### Umbrella group meeting dates 2026



ASD support for parents and carers  
10am - 12:30 Portfield School



ASD support for parents and carers  
**Umbrella Group Coffee Mornings**



The Umbrella group also has **coffee mornings** on an informal basis in Christchurch for parents and carers of children and young people with ASD.

**CAMHS** a free opportunity for parents/carers, professionals or young people to come and chat to CAMHS clinicians, ask questions, get advice and resources. See website for more details: <https://hampshirecamhs.nhs.uk/events/>

**We are here to support you and your child.**

**Please get in touch if you have any questions or concerns.**

Contact Us		
Mr Tom Chappell	SENDCo & Inclusion Lead Deputy DSL	Tel: 01425 614633 Email: <a href="mailto:SEND@nmjs.hants.sch.uk">SEND@nmjs.hants.sch.uk</a>
Mrs Cathy Weston	Family Support Worker Deputy DSL	Tel: 01425 614633 Email: <a href="mailto:c.weston@nmjs.hants.sch.uk">c.weston@nmjs.hants.sch.uk</a>



**EAL Award  
Bronze**  
Hampshire EMTAS 2021



**PINS Project**  
*Partnership for Inclusion of  
Neurodiversity in Schools*

